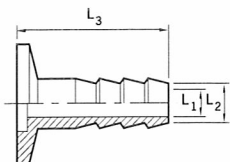


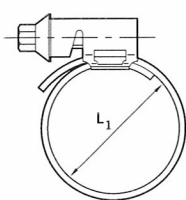
TECHNICAL DATA

size	L <sub>1</sub>	L <sub>2</sub>	L <sub>3</sub>	D	part numbers
------	----------------	----------------	----------------	---	--------------



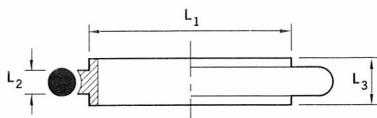
Nozzle - Aluminum

NW10	7	12	40		KA-10-032
NW16	9	16	40		KA-16-032
NW25	16	22	44		KA-25-032
NW40	7	12	40		KA-40-032



PVC Hose Clamp - Stainless steel

NW10/16	25				KS-10-039
NW25	36				KS-25-039
NW40	50				KS-40-039
NW50	60				KS-50-039



Centering Ring With 'O' Ring - Fluoroelastomer/stainless steel carrier

NW10	12	3.9	8		KS-10-127
NW16	17	3.9	8		KS-16-127
NW25	26	3.9	8		KS-25-127
NW40	41	3.9	8		KS-40-127
NW50	52	3.9	8		KS-50-127

- Fluoroelastomer/aluminum carrier

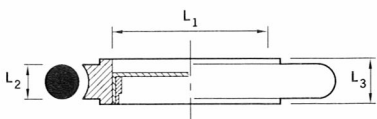
NW10	12	3.9	8		KA-10-127
NW16	17	3.9	8		KA-16-127
NW25	26	3.9	8		KA-25-127
NW40	41	3.9	8		KA-40-127

- Nitrile/stainless steel carrier

NW10	12	3.9	8		KS-10-227
NW16	17	3.9	8		KS-16-227
NW25	26	3.9	8		KS-25-227
NW40	41	3.9	8		KS-40-227
NW50	52	3.9	8		KS-50-227

- Nitrile/aluminum carrier

NW10	12	3.9	8		KA-10-227
NW16	17	3.9	8		KA-16-227
NW25	26	3.9	8		KA-25-227
NW40	41	3.9	8		KA-40-227

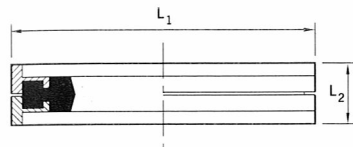


Centering Ring With Screen - Fluoroelastomer/stainless steel

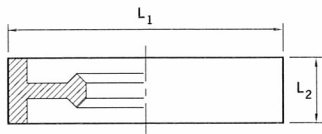
NW16	16	3.9	8		KS-16-133
NW25	25	3.9	8		KS-25-133
NW40	40	3.9	8		KS-40-133
NW50	50	3.9	8		KS-50-133

TECHNICAL DATA

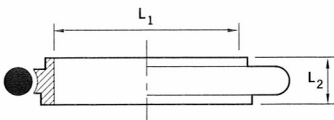
size	L <sub>1</sub>	L <sub>2</sub>	L <sub>3</sub>	D	part numbers
------	----------------	----------------	----------------	---	--------------



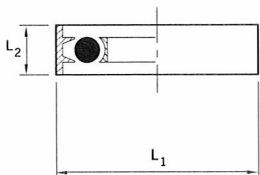
<b>Co-Seal - Nitrile/aluminum carrier</b>					
NW10/16	36	7			B271-58-480
NW20/25	42	7			B271-58-490
NW32/40	57	7			B271-58-500
<b>- Fluoroelastomer/aluminum carrier</b>					
NW10/16	32	7			B271-58-481
NW20/25	42	7			B271-58-491
NW32/40	57	7			B271-58-501



<b>Metal Seals - Aluminum</b>					
NW10/16	32	7			C271-59-004
NW20/25	42	7			C271-59-005
NW32/40	57	7			C271-59-006
NW50	77	7			C271-59-007



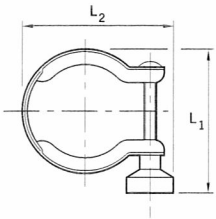
<b>Adapting Centering Ring With 'O' Ring - Nitrile</b>					
NW10/16 stainless steel	10	8			KS-10-234
<b>- Fluoroelastomer</b>					
NW10/16 stainless steel	10	8			KS-10-134



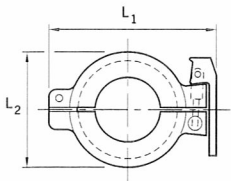
<b>NW Trapped 'O' Ring - Fluoroelastomer/stainless steel/aluminum</b>					
NW10/16	32.5	7			KA-10-138
NW25	42.5	7			KA-25-138
NW40	57.5	7			KA-40-138
NW50	77.5	7			KA-50-138

TECHNICAL DATA

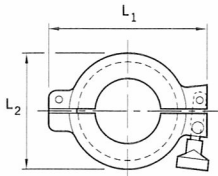
size	L <sub>1</sub>	L <sub>2</sub>	L <sub>3</sub>	D	part numbers
------	----------------	----------------	----------------	---	--------------



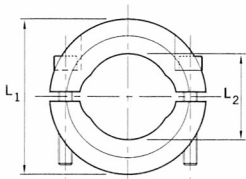
Clamping Ring - Stainless steel					
NW10/16	44	46			C105-12-401
NW20/25	60	60			C105-14-401
NW32/40	73	75			C105-16-401
NW50	90	96			C105-17-401



Hinged Clamp - Aluminum					
NW10/16	68	40			C105-12-402
NW20/25	80	50			C105-14-402
NW32/40	95	66			C105-16-402



Swing Clamp - Aluminum					
NW10/16	62	40			KA-10-036
NW20/25	75	50			KA-25-036
NW32/40	90	66			KA-40-036
NW50	120	86			KA-50-036



Clamp (Metal Seals) - Stainless steel					
NW10/16	54	22			KS-10-037
NW20/25	64	32			KS-25-037
NW32/40	82	47			KS-40-037
NW50	112	62			KS-50-037