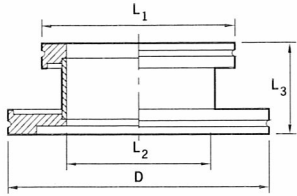


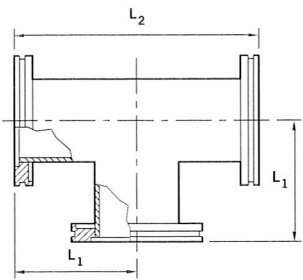
TECHNICAL DATA

size	L <sub>1</sub>	L <sub>2</sub>	L <sub>3</sub>	D	part numbers
------	----------------	----------------	----------------	---	--------------



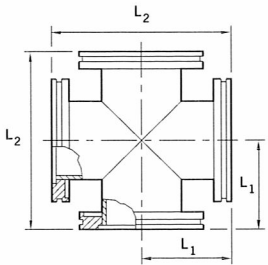
ISO/ISO Adapting Piece - Stainless steel

ISO100/ISO63	95	70	50	130	IS-10-058
ISO160/ISO63	95	70	50	180	IS-16-058
ISO160/ISO100	130	102	50	180	IS-16-059



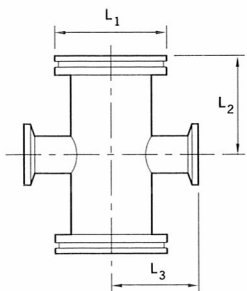
T-Piece - Stainless steel

ISO63	88	176			IS-63-030
ISO100	108	216			IS-10-030
ISO160	138	276			IS-16-030



Cross Piece - Stainless steel

ISO63	88	176			IS-63-031
ISO100	108	216			IS-10-031
ISO160	138	276			IS-16-031

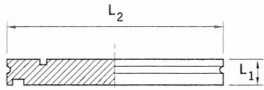


ISO To NW Reducing Cross - Stainless steel

ISO63/NW16	95	102	58		IS-63-047
ISO63/NW25	95	102	79		IS-63-048
ISO63/NW40	95	102	76		IS-63-056
ISO100/NW25	130	130	98		IS-10-048
ISO100/NW40	130	130	95		IS-10-056
ISO160/NW40	180	160	121		IS-16-056
ISO160/NW50	180	160	136		IS-16-057

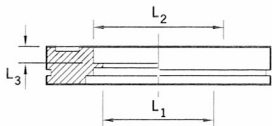
TECHNICAL DATA

size	L <sub>1</sub>	L <sub>2</sub>	L <sub>3</sub>	D	part numbers
------	----------------	----------------	----------------	---	--------------



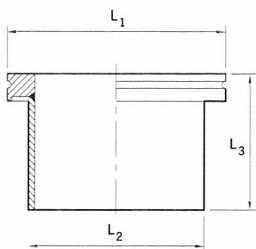
Blanking Flange For Use With Collar Flange - Stainless steel

ISO63	12	95			IS-63-026
ISO100	12	130			IS-10-026
ISO160	12	180			IS-16-026



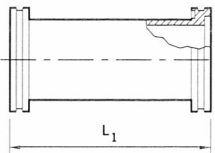
ISO Bored Flange - Stainless steel

ISO63	60.2	63.5	5.5		IS-63-061
ISO100	98.3	102	5.5		IS-10-061
ISO160	148	152	5.5		IS-16-061



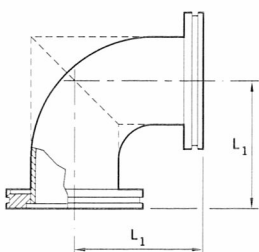
Collar Weld Stub - Stainless steel

ISO63	95	76	100		IS-63-025
ISO100	130	108	100		IS-10-025
ISO160	180	159	100		IS-16-025



Nipple - Stainless steel

ISO63	176				IS-63-028
ISO100	216				IS-10-028
ISO160	276				IS-16-028



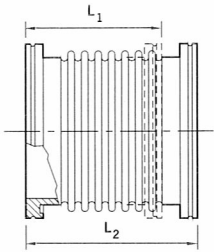
Elbow 90° - Stainless steel

ISO63	88				IS-63-029
ISO100	108				IS-10-029
ISO160*	138				IS-16-029

\* Shown dotted

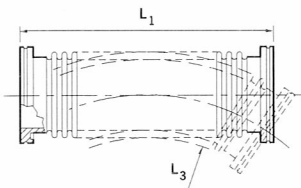
TECHNICAL DATA

size	L <sub>1</sub>	L <sub>2</sub>	L <sub>3</sub>	D	part numbers
------	----------------	----------------	----------------	---	--------------



Flexible Bellows - Stainless steel AISI 316L DIN 1.4404

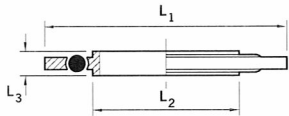
ISO63	130	150			IS-63-046
ISO100	130	150			IS-10-046
ISO160	130	150			IS-16-046



Flexible Pipelines - Stainless steel

ISO63	250		140		IS-63-021
ISO100	250		200		IS-10-021
ISO63	500		140		IS-63-022
ISO100	500		200		IS-10-022
ISO63	1000		140		IS-63-023
ISO100	1000		200		IS-10-023

L<sub>3</sub> = minimum band radius, static

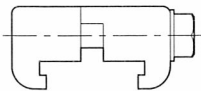


Trapped 'O' Ring - Stainless steel - aluminum outer

ISO63	95	70	8		IS-63-238
ISO100	128	102	8		IS-10-238
ISO160	179	153	8		IS-16-238

- Fluoroelastomer

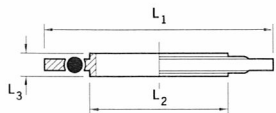
ISO63	95	70	8		IS-63-138
ISO100	128	102	8		IS-10-138
ISO160	179	153	8		IS-16-138



Claw Clamps - Aluminum

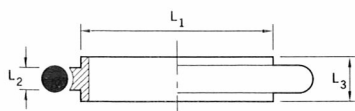
ISO63/ISO100					IA-63-054
ISO160/ISO250					IA-16-054

Number required: ISO63 - 4, ISO100 - 6, ISO160 - 8, ISO250 - 10



Trapped 'O' Ring - Aluminum centering ring, aluminum outer ring, fluoroelastomer

ISO63	95	70	8		IA-63-138
ISO100	128	102	8		IA-10-138
ISO160	179	153	8		IA-16-138



Centering Ring With 'O' Ring - Stainless steel

- Nitrile

ISO63	70	5.3	8		IS-63-227
ISO100	102	5.3	8		IS-10-227
ISO160	153	6.99	8		IS-16-227

- Fluoroelastomer

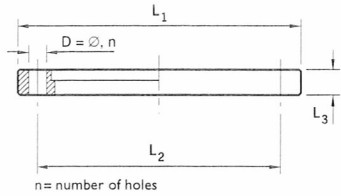
ISO63	70	5.3	8		IS-63-127
ISO100	102	5.3	8		IS-10-127
ISO160	153	6.99	8		IS-16-127

TECHNICAL DATA

size	L <sub>1</sub>	L <sub>2</sub>	L <sub>3</sub>	D	n	part numbers
------	----------------	----------------	----------------	---	---	--------------

Rotatable Flange With Fitting Kit - Mild steel nickel plated

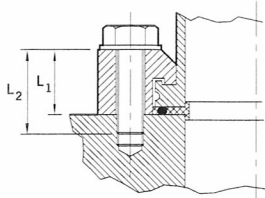
ISO63	130	110	12	9	4	IN-63-060
ISO100	165	145	12	9	8	IN-10-060
ISO160	225	200	16	11	8	IN-16-060



Half Claw Clamp For Use With Centering Ring (Tapped Holes)

- Zinc plated mild steel body, stainless bolt

ISO63	22.5	35	M8	4	IZ-63-052
ISO100	22.5	35	M8	8	IZ-10-052
ISO160	23	40	M10	8	IZ-16-052

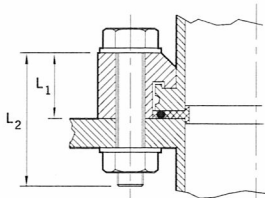


L<sub>3</sub> = head / D = number required

Half Claw Clamp For Use With Centering Ring (Clear Holes)

- Zinc plated mild steel body, stainless bolt

ISO63	22.5	35	M8	4	IZ-63-053
ISO100	22.5	35	M8	8	IZ-10-053
ISO160	23	40	M10	8	IZ-16-053



L<sub>3</sub> = head / D = number required